

# Eagles Mere Conservancy Newsletter

Issue Number 42

PRESERVATION ~ EDUCATION ~ RECREATION

May 2025

## Season Highlights

**SPRING WORKDAY**  
May 24<sup>th</sup> 9am @ Cabin

**SMOKEY BEAR**  
July 11<sup>th</sup>/Aug 8<sup>th</sup>  
10am @ Cabin

**FRIENDRAISER AND  
CELEBRATION OF KETTLE  
CREEK ACQUISITION**  
July 25<sup>th</sup> 5:30pm @ Dell

**CLYDE PEELING  
REPTILE SHOW**  
Aug 12<sup>th</sup> 7pm  
@ DeWire Center



## A note from our President

Dear Friends,

As we head toward summer and the start of the 2025 season, I find myself filled with gratitude for the visionaries that came before me to create the Eagles Mere Conservancy. In the 1980's, responding to concerns that the former Crestmont Inn and surrounding lands would be sold for development, a bold group of homeowners banded together and built support for the acquisition of 249 acres surrounding the Crestmont Hotel. Since then, we have added to our holdings and created learning and recreational opportunities - all with a goal of ensuring the protection of our forests, water and soil resources, wildlife habitat and the scenic beauty that defines this incredible place we all love.

Last November, we furthered our conservation mission with the acquisition of about 75 acres of forested land that we purchased from the Eagles Mere Country Club. We have renamed the parcel to reflect one of its key resource values – the headwaters of Kettle Creek. Over the next year or so we are going to spend time taking a comprehensive look at the Kettle Creek parcel and all of our holdings so that we can formulate a plan which will carry our conservation efforts well into the future. As stewards of the natural resources in and around Eagles Mere, we have much to consider including the health of our forest, protecting the watershed and enhancing opportunities for people to get out and explore.

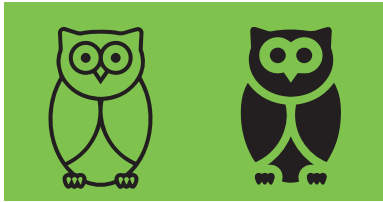
This year, we have a lot of great things lined up for people of all ages and we are delighted that Deb Geist will once again lead our environmental education program. She will be joined by Meredith Lambert, our new Assistant Environmental Educator. Meredith teaches 5th grade at Sullivan County Elementary School and will be a great addition to the team. Rounding things out is Maggie Herman as our new Environmental Educator Intern. I know the whole team is excited to welcome everyone to the Cabin this summer.

In addition to our amazing natural resources, Eagles Mere and Sullivan County are blessed with many volunteer organizations that help make it such a special place. I am delighted that this year we are partnering with three of these incredible organizations. We are working with the Eagles Mere Museum to offer three activities which will connect our history and our natural resources. EMC's collaboration with the Eagles Mere Friends of the Arts will involve shining a light on invasive species. We're also excited to help the EMFA celebrate its 50th Anniversary. Additionally, this summer we will be working closely with the Lake Mokoma Conservancy to promote events both here in Eagles Mere as well as in Laporte. Our organizations are always stronger when we work together for the benefit of all.

Before I close this letter, I would like to thank the amazing volunteers and donors who offer their time, talent, and hard-earned dollars to support the Conservancy. Each of these contributions are crucial to everything we do.

I hope you have a wonderful year and look forward to seeing you on the trails or at the cabin.

Sincerely, *Lori*



## ***Hoo's-who in the Conservancy***

### ***EXECUTIVE COMMITTEE***

*President* – Lori Faeth

*Vice President* – Jim Moyer

*Secretary* – Karen Stacks

*Treasurer* – David Stoeffel

### ***DIRECTORS***

Cynthia Bartus

Lisa Bocchini

Christine Carter

Elie-Anne Chevrier

Robin Dickinson

Kyle Gardner

Brian Gaul

Marty Hammond

Jan Johnson

Jeff Klemens

Ann Klotz

Margaret Liegel

Barbara Micco

Barb Powers

Lorraine Scaven

Pete Swinick

Steve Thompson

Tim Turner

***Consulting Forester:*** Dan Swift

***Lead Environmental Educator:***

Debbie Geist

***Educational Assistant:***

Meredith Lambert-Haring

***Summer Intern:*** Maggie Herman

***Contact the Conservancy***

***Telephone:*** Cabin: 570.525.3725

***Email:*** [conserve@epix.net](mailto:conserve@epix.net)

***Website:***

[www.eaglesmereconservancy.org](http://www.eaglesmereconservancy.org)

***Facebook:*** [eaglesmereconservancy](https://www.facebook.com/eaglesmereconservancy)

***Instagram:*** [eagles\\_mere\\_conservancy](https://www.instagram.com/eagles_mere_conservancy)

***Conservancy Cabin Hours***

June 25-Aug 15 • 9:00 am – 4:00 pm

## **What an Impact You Make**

Our sincere thanks to all of you who continue to financially support the Eagles Mere Conservancy. Your generosity enables the nature-based educational programming for children and adults in the community, preserves the land in and around Eagles Mere, and provides recreation opportunities for everyone. Each year we have an ambitious list of projects that need funding, including trail maintenance, our multi-year reforestation efforts, songbird enhancement areas, restoration of our village green, and special campaigns. One such effort in 2024 was the purchase of the Kettle Creek Property—an opportunity to permanently protect an ecologically valuable parcel and expand public access to conserved land, all of which would not have been possible without our donors. There are many ways to give to the Conservancy. Gifts of cash donations, real estate, life insurance, marketable securities, bequests, gifts from IRAs, grants from donor-advised funds and trusts, and corporate matching gift programs. To determine the best donation approach for you, we recommend speaking with your attorney or financial advisor. Contact us at [conserve@epix.net](mailto:conserve@epix.net) for questions or more information. We encourage you to read the committee reports included in this newsletter for a more detailed look at all that we've accomplished—and all that lies ahead!

***Kyle Gardner***

**venmo**

Eagles Mere  
Conservancy

@EaglesMere-  
Conservancy

Scan this code to pay





## Charting the Path: Finance Committee's Role in Conservancy's Mission

The Eagles Mere Conservancy has enjoyed a year of remarkable growth and progress, guided in part by our Finance Committee's initiatives that reinforce our mission to preserve the stunning natural beauty of Eagles Mere and its place in the beautiful Endless Mountains region. Through meticulous planning and decision-making, we've made significant strides in securing the future of the Conservancy and its beloved lands, while improving the efficiency and lowering the costs of the Conservancy's financial assets known as its Endowment.

One of the year's standout achievements was the acquisition of the Kettle Creek property, a priceless asset that deepens our dedication to conservation in and around Eagles Mere. At the direction of the Conservancy's Board, the Finance Committee coordinated existing assets and ensured funds were made available to facilitate a seamless process for this transformative addition. Following the purchase, we rebalanced and streamlined our portfolio, cutting out costly and inefficient investments to reduce expenses and boost operational efficiency, all while adhering to our investment policy.

Our annual financial review was another key accomplishment, where we evaluated our asset allocation and investment strategy. This review is a crucial tool for long-term planning and execution, aligning spending with expected market volatility and earnings, and emphasizing the Endowment's vital role in supporting the Conservancy's mission. The Endowment, coupled with essential elements like Board

involvement, trail maintenance, and the continued hard work of our volunteers, helps to form the backbone of our stewardship.

However, external pressures such as unprecedented market volatility and evolving forest management challenges have increased demands on the Endowment. Environmental changes, insect activity, and natural forest evolution bring additional responsibilities and costs that require careful planning and continued community support.

We are incredibly thankful for the community's generosity during Giving Tuesday, which resulted in strong and much-needed donations. As we navigate budget season and gear up for another year of conservation efforts, we must continue to rely on ongoing community support. Rebuilding our Endowment, which was significantly reduced by the Kettle Creek land purchase, is crucial to steering through this era of uncertainty and sustaining the Conservancy's mission for future generations.

Despite the challenges, we are filled with optimism and enthusiasm for the path ahead. With the unwavering commitment of our Board and supporters in our community, the Finance Committee remains focused on ensuring that Endowment funds and financial strategies provide a solid foundation for the Conservancy's future. Together, we are nurturing a legacy of protection, preservation, and shared responsibility.

### *Finance Committee*

## Notes from the Cabin

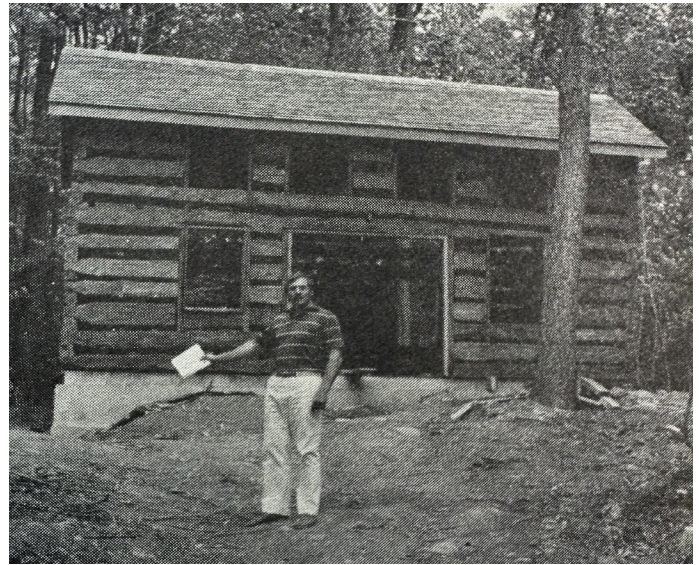
Here we are again... a new spring with new days full of endless possibilities with the chance to choose JOY over joylessness. We are approaching a new season, some of us in more ways than one. I am so happy to be a part of this season at the Conservancy. It is something I don't take for granted.

I'd like to reflect on last year and express my sincerest thanks to the parents and grandparents who took their time, energy, and effort to pour into their little ones. What a blessing to observe. Programs included Gnome Homes, Clay Faces, Pond Pokes, STEAM and Jr. STEAM, Nature Art, Envirothon, Reptiland, guest speakers from the Sullivan and Lycoming Counties, and Smokey Bear... oh my!

The cabin had a few new items to make my job run more smoothly. A new printer was needed along with a new laptop, as they were outdated. A new potable water source, a water cooler, was also added to the Cabin. These items were all through the generous donations of Margaret, Eric, and Laurel Allen. These donations are directly obvious: I'm thirsty and I need a drink, or something needs to be printed for a program. I would also like to thank those donations that people do not see: time spent beautifying EMC and the money donated via cash, and Venmo. Donations go towards the Conservancy, and some get earmarked for our educational programs. ALL donations of time and money gifted to EMC are greatly appreciated and needed. Knowing there are such generous people out there is

something to be celebrated. Our programs have been running and will continue to run with these generous offerings. If you don't have the time, donate money. If you don't have the money, then donate your time. The trails don't blaze themselves since the gnomes, snipes, and fairies went on strike.

We had some special guests this past summer. Louise Kirk Reighard visited the Cabin, specifically, the adorable gem we call "The Playhouse" which was her very own sanctuary from early childhood. She brought with her the 7th generation of the Kirks and was able to watch the youngest family members play. Having been able to conduct an impromptu recorded interview with Louise, I learned quite a bit of history that I can share with current and future guests. The playhouse was built by Louise's father, Henry Kirk Jr., in 1928. To say hundreds of kids have appreciated and played in this house would be an understatement. What joy this playhouse brings to the community, all because of one man loving his children almost a hundred years ago. Here's to one hundred more years, Mr. Henry Kirk Jr.



important piece of Eagles Mere's history. It needs to be documented and put in a format that can be shared with anyone who wants to hear it. There are many such stories like Louise's and other EM organizations. You are reading this one now because you care. For EMC, this is the most important story, because it is ours. We have all heard the Native American Proverb that we do not inherit the land from our ancestors, but rather borrow it from our children. The important question you should be asking here in the present is how will we leave our imprint. I would have to think that is what the original members of EMC asked themselves, "How do we leave Eagles Mere for our future generations?"



I leave you to ponder the following thoughts. As we saw with Louise, history is important. When stories get passed down, sometimes details are accurate, and sometimes slightly embellished. We all have that uncle who caught a fish that was "this big" and a grandparent who walked to school uphill... both ways. The history and formation of the Eagles Mere Conservancy is an

Last year was the 40th anniversary of our 1st Newsletter. Here is where I started reading the story of EMC for myself. I have been working on a document that tells the history of EMC in the words of its first committees and president. Over forty years ago, people had a vision and a mission. Look where Eagles Mere is now compared to where it could have been. This quaint little town with its fresh mountain air and crystal-clear water is unique. What if those dedicated people had never asked the question, or had their vision? The conservancy lost another founding member, Mary Godley, last year. She was one of many founders of EMC that are now, physically, no longer with us. They left behind a legacy for you and your children. This generation needs to carry on the work of others now passed. We need to keep reminding ourselves that if being good stewards of the natural world was important enough for their future kin, shouldn't we feel the same way for ours? Without people to run it, people to nurture it, volunteers to maintain it, and financial contributions to continue supporting it, the Conservancy can't support its vision. We should be asking ourselves that same question asked over 40



years ago, "How do we leave Eagles Mere for our future generations? What will it look like 40 years from now?"

All the best, **Debbie Geist**

## Greetings from the Trails

We are looking forward to a summer of great events and continued improvements to the trails. Be on the lookout for our Summer Hike schedule. The schedule will be posted around town, at the Cabin, and on our social media pages. We are dusting off the hike archives and looking forward to exploring some forgotten trails.

A list of other suggested hikes around Sullivan County will be available at the Cabin. Our friends at the Alpine Club of Williamsport, Worlds End State Park, and the Mokoma Conservancy are also excellent resources for local trails and hikes.

A new addition to the schedule this year is the Sunday Stroll series. These strolls will highlight the Conservancy's trails and letterboxing challenge. Letterboxing is a family-friendly, outdoor, treasure-hunt adventure. Clues will guide the participant to the

location of weatherproof boxes containing a rubber stamp or hole punch. Collect at least 12 stamps or punches and pick up your official EMC letterboxing t-shirt!

Trail maintenance projects are always ongoing. Please let us know if you encounter any issues when out on the EMC trails. We are continuing the work on the drainage issues, making new signage, and remarking the trails.

Please remember the trails are for walkers/hikers/runners. Bicycles are permitted **ONLY** on the rail trail. Motorized vehicles are off-limits on all trails.

Happy exploring! See you on the trails!

**Steve Thompson and Cynthia Bartus**

## Tale Of A Happy Wanderer



I was a pretty lucky kid. My first adventures on the trails of Eagles Mere began in the summer of 1972. Those early hikes we always took as a family. My dad, mom, sister, brother, and our crazy Weimaraner, Hans. Oh how that dog loved his off-leash romps in the woods. We quickly learned to pay attention to where his sounds were

coming from, lest he end up behind you on the path. Thundering up the trail with glee, if you weren't nimble enough to jump aside, he mowed you down where you stood. Yes, we learned this the hard way.

In my eyes, these arrow paths were perfect. Each one special, each with the promise of delightful discoveries along the way. Which trail today? Green? White? Or will it be the red arrow with those caverns of huge boulders

and a wishing well at the end? Many a wish was made with the pennies Dad always had jingling in his pocket. Am pretty sure some of those even came true. Hans' one wish to muck about in the cool spring was granted each trip.

The yellow arrow, in kid math, was about 10-20 miles long and most of a day's adventure. We never did make it all the way to Canyon Vista overlook, but it was always a **REALLY BIG HIKE**.

The blue arrow was another hefty and rather ambitious trek, but with a picnic in tow, the reward was the spectacular trio of Wenonah Falls. These were the very first waterfalls I had ever been to in my whole entire life. My adult self thinks they are still just as spectacular.

When my children were young, experiencing these trails through their eyes brought me so much joy. Every treasured stone or leaf, caterpillar or salamander took me back to times of my childhood. Many giggles were shared over wacky chases to capture an unwitting toad or frog spotted along the way. Their earliest appreciation of nature's wonders happened right here in Eagles Mere, in these same woods, on these same beloved arrow paths. Summers now are more brief, but these hikes always make it to the top of their bucket lists while here on the mountain.

Today these trails and I are old friends. I love nothing more than losing myself in random thoughts as I stroll these well worn paths. The wonderful fragrance of leaves and ferns and hemlock soothes my soul. Dappled sunlight shining through the trees, occasional stirring of a woodland creature. Familiar yes, but they still hold the promise of new discoveries with every mile. I find myself picking up cool stones or peeking under the bark

of old logs in the hope of spotting that salamander, or at times marveling at something I just can't figure out how I missed in my younger years. There is a kind of magic in these woods, of that I am sure.

***Lorraine Gilmore Scaven***

(Photo credit Walt Gilmore)

## Forest Stewardship Committee

### Getting Ready for the Next Ten Years of Forest Stewardship

This has been an exciting year for the forest stewardship committee because as we enter the 2025 summer season, we have ... more forest! The 75 additional acres of forested land purchased from the EM Country Club brings our total holdings to about 450 acres. This forest includes some wetland habitats that are unique within our holdings, and we look forward to starting the process of integrating these holdings in ways that will support the educational, conservation, and recreational aspects of the conservancy mission.



[A stream running through the north side of the new conservancy acquisition, near the border with the Loyalsock State Forest. March 2025.]

We are actively completing various projects across our holdings to enhance the enjoyment of our visitors. These include enhancements to the DeWeese Redevelopment area, the open area enhancement projects (there are seven), and the rail grade improvement efforts.

This year it is also time to update our 10-year management plan. A major focus of this plan will be on increasing the diversity, and thus the resilience, of the ecological communities that make up the Conservancy. The types of activities we expect to incorporate include:

### Continued Diversity Enhancement

Tree and shrub release is an action designed to enhance the growth of high-value species by increasing targeted removal of the vegetation that shades them, or by reducing the density of surrounding nutrient competitive plants. We will continue monitoring the 2023 diversity plots established along the rail trail where we planted 56 individuals of 12 different tree and shrub species selected to support wildlife populations and look for opportunities to introduce high value species where clearings open up in the forest canopy due to disease or other factors.

[A white oak sapling and other plantings in the diversity plots, May 2024.]

### Herbaceous Forest Openings

While large contiguous forests are necessary to provide the habitat required for some species such as the pileated



woodpecker and the northern goshawk healthy forests contain gaps in the forest canopy where enough light reaches the ground to allow native grasses and sedges to grow. These "open areas" are micro-habitats that can provide food, nest sites, and cover for a wide variety of wildlife including native song and game birds. We have developed an "open Areas Adoption program" where groups of people have gotten together to manage existing open areas on conservancy lands under guidance from the Conservancy Forest Stewardship Committee and we plan to expand these efforts in the future.



## Forest Edge Improvement

Forest edges are important areas used for nesting, feeding and travelling by many species. Edge improvement around open areas and the conservancy borders will be designed to provide various vegetation types in layers consisting of short, moderate, medium, and taller grasses and bushes blending into the tree line. This will maximize the value of these edges to wildlife.

## Establishing Brush Piles for Wildlife

Strategically located brush piles are an easy way to provide resting/cover and den sites for wildlife. Brush piles are used for cover by eastern cottontail rabbits and other small mammals. Songbirds may use brush piles for perching sites, especially if they are located near open areas/feeding sites or nesting areas. If the brush piles are near water, amphibians and reptiles may use them for breeding, feeding, or resting.

## Understory Management

Although ferns are a beautiful, native part of the understory in Pennsylvania forests, parts of the Eagles Mere forests are developing dense fern cover as a result of deer browsing on other understory plants. This overgrowth of fern is poor wildlife habitat and can inhibit the regeneration of desirable tree species.

## Snag Management

Snags are dead or partially dead standing trees that provide many benefits to wildlife. Snags provide cavities for nesting and resting, perches for hunting and displaying, and lots of food for the insect eaters. In Pennsylvania, there are over 35 species of birds and 25 species of mammals, including flying squirrels, that use snags during a portion of their life cycle. Identifying safe places where we can leave dead trees standing will support wildlife populations.

## Water Source Development and Seep Management

Seeps in the woods provide year-round water to the wildlife population. Ensuring that the sides of seeps are vegetated and not disturbed, and creation of small pools along the seeps can add wildlife opportunities for water during dry and winter months.

For more information about how you can help/be involved in enhancing our holdings or working with an open area group, please reach out and contact us.

## Forest Stewardship Committee

**Jeff Klemens – Chairman**

**Dave Stoeffel**

**Pete Swinick**

## EMC Acquires 75 Acres Of Kettle Creek Headwaters

Late last year the Conservancy purchased 75 acres of land bordering the Loyalsock State Forest from the EM Country Club. This acquisition is directly aligned with EMC's mission statement: *"The Eagles Mere Conservancy preserves natural resources through land acquisitions for water and soil conservation, wildlife sanctuary and refuge, and preservation of scenic beauty in Eagles Mere, PA, and the surrounding area."*

This parcel is a portion of the headwaters of Kettle Creek, a very high-quality waterway as designated by the Commonwealth. The PA Fish and Boat Commission has designated this part of the watershed as a "Class A wild trout stream" and the DEP has designated the watershed as "exceptional value" for water quality.

Other characteristics of this acreage include an area of wetlands and uplands identified as habitat for species of special concern by the "Natural Areas Inventory of Sullivan County", which was conducted by the Pennsylvania Natural Heritage Program for The Sullivan County Office of Planning and Development - the document was published in 1995 and updated in 2001.

In their review of this acquisition, the Commonwealth State Forester Seth Cassell stated, *"The acquisition of this portion of the Eagles Mere Country Club that is directly adjacent to lands of the Loyalsock State Forest will provide additional protected forestland in the headwaters of the Kettle Creek watershed and will protect this parcel from development. Furthermore, this acquisition will directly support the recent efforts towards a comprehensive recreation, trail, and open space plan for Sullivan County. I thank the Eagles Mere Conservancy for this undertaking and offer the support of DCNR staff to help identify any unique habitats and species of concern that may warrant special management"*.

In addition, setting this land aside for non-development will create a buffer between Kettle Creek and the other property recently sold along the white arrow trail. Since 30 acres of the 75 is land within the Borough, this acquisition has retired a piece of highly desirable developable land in the Borough at the edges of current development, thus creating a buffer for the Creek.

The interests of the Country Club and the Conservancy were very much aligned. While the club had planned a land sale to finance upcoming projects, they also wanted to have this land remain undeveloped. As we worked through negotiations on how to accomplish various goals, the Conservancy expressed an interest in obtaining a right-of-way through other areas of Club lands not being purchased so that we could develop a continuous linear pathway along the old Sonesville rail grade. This would provide a 3-4 mile trail from the Outlet Point on Rt 42, to Worlds End Road along Kettle Creek. The Club granted the Conservancy the ROW across their other lands on the old Sonesville rail grade. And while use of the ROW and the rail grade through the new acquisition is limited to hiking and x-country skiing/snowshoeing (bicycles and motorized vehicles are expressly prohibited as requested by the Club), the rail grade access will also provide visitors with linkage to many Commonwealth trails in

the Loyalsock State Forest.

Now the work begins as we plan how best to incorporate this new land into our holdings for the benefit of our natural resources along with hiking and exploring for our community. It will take time, but we are excited about the opportunity. This acreage will be integrated into our next Forest Stewardship plan for our holdings which we are updating over the next year. Of central concern will be tackling how we respond to the loss and/or potential loss of many tree species from disease, (Hemlock, Ash, Beech) and the over browsing by deer which eliminates the development of the young trees from seed.

EMC will be planning introductory hikes of our new acquisition this summer.

**Pete Swinick**

## **The Friends of the Arts Celebrates 50 Years** **"Great art picks up where nature ends" - Marc Chagall**

This summer the Eagles Mere Friends of the Arts will celebrate 50 years of bringing the arts to Sullivan County. Our summer program has significantly expanded from its initial focus on classical music to include professional concerts, live theatre, dance, art classes and Brain/Food's community potluck dinners paired with a film, lecture or book discussion. We are grateful to the Eagles Mere Conservancy for generously allowing the Friends of the Arts to use the Village Green for our popular free Wednesday night concert series.

### ***And mark your calendars for these special events!***

On July 1 - 3 we will kick off our celebratory 50th year with "50 x 50", an art exhibition featuring the works of 50 professional and amateur artists with ties to Eagles Mere and Sullivan County. In addition to the ongoing exhibit display times, you are also invited to view the exhibition at a reception with complimentary music & light bites on Wednesday, July 2, 4 - 6 PM, at the DeWire Center, 891 Laporte Avenue in Eagles Mere. And, in a nod to our past, on August 23rd the Orpheus Club, an a capella group that was a staple of the Friends of the Arts' early seasons, will return. See [www.emfoa.org](http://www.emfoa.org) for the full list of summer 2025 events and classes.

Recognizing the natural synergy between art and nature, the Friends of the Arts and the Conservancy are continuing to collaborate. In 2024 we joined forces to honor the birds of Sullivan County with a series of programs inspired by our avian friends.

Each organization's web page and the *Sullivan Review* highlighted a dozen birds selected by a team of Board members and volunteers from the over 100 bird species that nest in or migrate through Sullivan County each summer. Photographer Rick Liebert, whose beautiful images accompanied the highlights, worked with the *Sullivan Review* to make them a regular feature of the paper. Additional bird-themed art programs in 2024 included building bird houses and creating block prints of birds. In 2025, Brain/Food and the Conservancy are co-sponsoring programs that highlight the invasive species encroaching on our natural flora.

The Eagles Mere Friends of the Arts could not have thrived for 50 years without the generosity and loyalty of the entire community. It is a testament to our volunteers and supporters that a rural, largely seasonal

**CONCERTS. THEATRE. DANCE. LECTURES. FILMS & ART CLASSES**



[emfoa.org](http://emfoa.org)



**Free &  
Paid events!!**

**DAVID A DEWIRE CENTER  
891 LAPORTE AVENUE, EAGLES MER**





town of our size has been able to mount professional music, art and theatre programs for half a century. Our events are open to all and approximately half are free. We hope you will consider doing your part to assure the future of the arts in our community by becoming a member or making a donation on line at [www.emfoa.org](http://www.emfoa.org). Memberships start at \$100 and include event tickets. Questions? [emfainfo@gmail.com](mailto:emfainfo@gmail.com)

## Property Committee News

The Property Committee has been busy gearing up for an exciting 2025 season. Maintenance, preservation, and enhancement are our focus. Coming soon to the Village Green, a fresh new look for the Gazebo sporting a new palette of colors. Also adjacent to the Green is a newly improved, more attractive entrance to the parking lot thanks to a 2024 grant and collaborative effort between the Eagles Mere Foundation and the Conservancy. This area will provide food and habitat for our wildlife friends as well as help address problematic water drainage issues. This season we will also be adding additional picnic tables at the Cabin to accommodate more seating for our expanding nature programs for all ages.

The Nature Trail Committee continues to develop a plan for improvements and additional stations for the education and enjoyment of all who come to explore the trail. We are looking for designs for a new archway "Wisdom begins in Wonder" at the beginning of the trail. Other projects include improvements and better utilization of the Village Green and Dell. Do you have ideas and a desire to be a part of our ambitious projects? Please contact Jan at [eckassab@gmail.com](mailto:eckassab@gmail.com). We would love to have you be a part of our committee and hear your ideas.

We truly appreciate all of our volunteers, especially



## Recipe Corner

This fresh and delicious appetizer is perfect for summer gatherings. Enjoy!

***Tuna Tartare*** (from the kitchen of Ruth Craig)

### Ingredients

- 6 oz. Sushi-grade tuna, cut into ¼" dice
  - 2 tablespoons scallions, green parts only, finely chopped
  - 2 tablespoons toasted sesame seeds
  - 2 tablespoons soy sauce
  - 1 teaspoon sesame oil
  - 1 teaspoon peeled and grated ginger
  - 1 clove garlic, minced
  - ¾ teaspoon orange zest
  - 2 tablespoons cilantro, finely chopped (or parsley)
  - ½ teaspoon kosher salt
  - 1 avocado, cut into ¼" dice
  - 2 teaspoons lime juice
  - KA-ME wasabi rice crackers
1. Mix tuna, scallions, sesame seeds, soy sauce, sesame oil, ginger, garlic, orange zest, cilantro and salt in a bowl.
  2. Assembly: just before ready to serve, add the avocado and lime juice. (Do not mix in advance) Place a heaping teaspoon of the tuna mixture on cracker and garnish with cilantro (or parsley). Do not leave tuna at room temperature for more than an hour.

Alternatively, you can leave tuna mixture in serving bowl and let your guests dish up!



our chainsaw ninjas who help to keep our Rail Trail and other areas clear throughout the year, particularly during the quieter seasons. This winter has been especially hard on trees with its high winds and ice. Since many hands make light work, come join us for our Spring Work Day on May 24th (the Saturday of Memorial Day weekend) so we can spruce up and make ready our properties for the summer. We will meet at the cabin at 9 AM for work assignments. Please bring

gloves, clippers, brooms, and rakes. We may also need some chain saws, a tall ladder, and a gutter cleaner, too.

This summer may you create new memories, develop new friendships, discover new wonders and treat the natural beauty of this area with care. "In every walk with nature one receives far more than he seeks" (John Muir). Enjoy and have a great summer!

*Jan Johnson*

## Program Committee

Summer is calling my name with its promise of sunny days spent next to our dear lake! As we look towards warmer months, I am grateful for the small but mighty team that makes the Conservancy programs extraordinary. When I hear the laughs of children dancing around the walls of the Cabin or see eyes open wide in astonishment at all Nature has to offer, I know that the efforts made in the hidden months of Winter have brought it all to fruition.

Debbie Geist continues to play an invaluable role as Lead Educator at the Cabin. Returning families as well as new visitors delight in the information she shares while wrapping it all up in fun and engaging activities. In addition to Debbie, we welcome Meredith Lambert-Haring and Maggie Herman. Their hard work and dedication are already evident and greatly appreciated.

Meredith, a local teacher, has been working diligently all Winter to plan wonderful activities to complement Debbie's programs. As you look at the schedule, you will see that Meredith has quite the line-up of special guests for what is gearing up to be a fun-filled summer. From learning about tracks and scat from a warden with the PA Game Commission to a program on beavers by the Middle Susquehanna Riverkeepers Association, please keep an eye out for many of the special guest presenters who will be visiting the Cabin this summer. Additionally, Meredith will be leading the "Sunday Strolls" that

visit local trails. For folks interested in letterboxing or in exploring the paths that make their way through our forests, consider adding a "Sunday Stroll" to your weekend plans.

Maggie Herman will be joining us this summer in the role of summer intern. Maggie will kick off the summer season with her own activities at the Cabin. Maggie's ties to Eagles Mere reach back to when she herself was an active participant in Conservancy shenanigans as a young child. We are excited for her to join us this summer and bring those past experiences into the present with her own spin on Conservancy activities.

In addition to the interactive programs led by Meredith and Debbie, we are collaborating with the Eagles Mere Museum this summer on several activities. We believe that all can benefit when organizations work together for the good of the community. Look for activities centered around the histories of the Regatta, the Laurel Path, and the Railroad. As everything in life is intrinsically connected, combining our strengths of history and nature/conservation just makes good sense.

Here is to time spent connecting with friends and family surrounded by Nature's bounty!

*Margaret Liegel*





## 2025 Eagles Mere Conservancy Summer Programs Schedule

All children 5 and under must be accompanied by an adult.

Cabin Hours: **Open Daily** from 9:00 am – 4:00 pm

***All programs begin at 10:00 am at the Conservancy Cabin unless otherwise indicated.***

***Be on the lookout for pop-up programs throughout the summer.***

***Except for our Yoga Programs, ALL conservancy programs are free and open to the public.***

***\*\*GENTLE YOGA / SOUND MEDITATION will be offered through EMC for a fee of \$20.00 each/person. The dates, locations, and details are noted in the newsletter.***

---

### JUNE

**6/21 Saturday, 9:00 am-10 am. GENTLE YOGA / SOUND MEDITATION.** Join Amy Houseknecht in a gentle yoga/sound meditation as you enjoy the sights and sounds of nature. Participants need a yoga mat/blanket/towel to lay on during the class. Location: Village Green. Cost is \$20 per person. Cash or Venmo.

**6/25 Wednesday, 10:00 am-11:15 am. TRAILS and TALES** Opening Day. Intergenerational. Come explore the Cabin and Nature Trail and meet our new summer helper, Maggie. Explore the wonders of camouflage while we read a book about what happens when you blend in a little too much. Make a leaf mask and see how well you blend in with the forest! Cabin, Maggie.

**6/26 Thursday, 10:00 am-11:15 am. JUNIOR STEAM.** Intergenerational. We all need a place to call home! Come learn about different nests and weave a bird nest of your own. Cabin, Maggie.

**6/27 Friday, 10:00 am-11:15 am. STEAM.** Intergenerational. Ever wonder how needed supplies are dropped into disaster zones by helicopters? Come be a Mechanical Engineer and create a "Supply Pod" in this twist on an Egg Drop Challenge using supplies we have on site. Cabin, Debbie.





**6/28 Saturday, 10:00 am-11:15 am. ENVIROTHON 101.** Intergenerational. **OWL FORENSICS. Recommended** 5th-8th grade. Come explore Barn Owl biology by dissecting owl pellets. Owl pellets are regurgitated masses of undigested food; they give scientists valuable clues about the owl's diet and ecosystem. Cabin, Debbie.

**6/29 Sunday, 10:00 am-11:15 am. Sunday Stroll:** Intro to Letterboxing. Learn all about the EMC Letterbox Scavenger Hunt! We will help you find one Letterbox and get you started for the summer. Collect 12 of the 15 Letterbox Stamps to earn a prize! Cabin, Debbie.

**6/29 Sunday, 5:00 pm-6:00 pm GENTLE YOGA / SOUND MEDITATION.** Join Amy Houseknecht in a gentle yoga/sound meditation as you enjoy the sights and sounds of nature. Participants need a yoga mat/blanket/towel to lay on during the class. Location: The Dell. Cost is \$20 per person. Cash or Venmo.

**6/30 Monday, 10:00 am-11:15 am. EMC SPECIAL GUEST.** The Buzz about Mosquitoes interactive presentation with Special Guest Sullivan County Conservation District - Cabin, Debbie.

---

## JULY

**7/1 Tuesday, 10:00 am-11:15 am. EMC SPECIAL GUEST.** All About Aquatic Macroinvertebrates interactive presentation with Special Guest Ms. Sara Schlesinger from Northcentral Pennsylvania Conservancy. Cabin, Debbie.

**7/2 Wednesday, 10:00 am-11:15 am. TRAILS and TALES.** Intergenerational. Come read about some animals along the Nature Trail and use air-dry clay to sculpt your mini-animal! Choose from bunnies, deer, bears, frogs, and more animals around Eagles Mere. Once dry, decorate your sculpture with paint. Cabin, Debbie.

**7/2 Wednesday, 6:00 pm-8:00 pm- Outdoor Nights.** Ages 8+. Bring your flashlight and join us in tag and many other fun activities. A perfect opportunity for kids to play and stay busy while parents are enjoying an evening on the Green. *If events on the Green are canceled due to weather, this too is canceled.* Carter's Dell, Debbie.

**7/3 Thursday, 10:00 am-11:15 am. JUNIOR STEAM.** Intergenerational. Pre-K to 4th but all are welcome. Come take a walk down around the pond, listen to the story *Rainbow Fish* and participate in an activity where you become an architect and create your very own tissue-paper stained glass window. Cabin, Debbie.

**7/4 Friday, 10:00 am-11:15 am. STEAM.** Intergenerational. Come experience the design process and create a mosaic made with *LEGO DOTS*. Your challenge is to create something seen in nature. Your mosaic will be displayed throughout the summer season for all to see. Cabin, Debbie.





- 7/5 Saturday, 9:00 am-10 am. GENTLE YOGA / SOUND MEDITATION.** Join Amy Houseknecht in a gentle yoga/sound meditation as you enjoy the sights and sounds of nature. Participants need a yoga mat/blanket/towel to lay on during the class. Location: Village Green. Cost is \$20 per person. Cash or Venmo.
- 7/5 Saturday, 10:00 am- 2:30 pm. RIDE THE RAILS.** Intergenerational. Grab a bike or take a jog with a lil' biker and earn ice cream from the Sweet Shop while enjoying the Railroad Bed trail from the cabin to Casino Drive. Each way will earn scoops. Earn extra scoops by visiting the Eagles Mere Museum and checking out the train exhibit. While visiting the EM Museum, join in on a fun craft that celebrates the history of the railway. Cabin, Debbie.
- 7/6 Sunday, 10:00 am AND 2:00 pm. SUNDAY STROLL:** Red Arrow Path. Meet at the trailhead at the north end of Mineral Springs Road in Eagles Mere Park for an approximately 1.5-mile hike featuring the Rock Labyrinth and Big Spring. Be sure to wear sturdy, close-toed shoes and bring water. Join the group at 10:00 am or the group at 2:00 pm, both led by Meredith.
- 7/7 Monday, 10:00 am-11:15 am. EMC SPECIAL GUEST.** Busy, Busy Honey Bees interactive presentation and craft with Special Guest Sullivan County Conservation District - Cabin, Meredith.
- 7/8 Tuesday, 10:00 am-11:15 am. EMC SPECIAL GUEST.** Color Your World "Sun Print" story and craft with Special Guest Ms. Sarah Abernethy from the Sullivan County Library - Summer Reading Program. Cabin, Meredith.
- 7/9 Wednesday, 10:00 am-11:15 am. TRAILS and TALES.** Intergenerational. Pre-K to 4th but all are welcome. Come walk the Storybook Walk (The Salamander Room) and create your very own pet salamander and habitat using things found around the cabin., Debbie.
- 7/9 Wednesday, 6:00 pm-8:00 pm- Outdoor Nights.** Ages 8+. Bring your flashlight and join us in tag and many other fun activities. A perfect opportunity for kids to play and stay busy while parents are enjoying an evening on the Green. *If events on the Green are canceled due to weather, this too is canceled.* Carter's Dell, Debbie.
- 7/10 Thursday, 10:00 am-11:15 am. JUNIOR STEAM.** Intergenerational. Come learn about patterns and spiders. We will create our own spider's web that you can hang on a tree in your yard and watch them twirl around in the wind. Intergenerational. Cabin, Debbie.
- 7/11 Friday, 10:00 am-11:15 am. SMOKEY BEAR AND FIRE PREVENTION PROGRAM.** Intergenerational. After an informative program on fire prevention and the methods used to fight forest fires, everyone's favorite bear will pay a visit. Don't forget your camera! Intergenerational. Cabin, Debbie.
- 7/12 Saturday, 10:00 am-11:15 am. ENVIROTHON 101.** Intergenerational. **POLLINATOR POPS.** Children and adults will enjoy learning about the importance of pollinators in the garden. Everyone will be able to select seeds for their personal pollinator pop. Feel free to *bee* creative! Intergenerational. Cabin, Debbie
- 7/13 Sunday, 10:00 am AND 2:00 pm. SUNDAY STROLL:** Falls Path. Meet at Cabin for an approximately 2.5-mile hike to Rusty Run Falls. Be sure to wear sturdy, close-toed shoes and bring water. Join the group at 10:00 am or the group at 2:00 pm, both led by Meredith.
- 7/14 Monday, 10:00 am-11:15 am. EMC SPECIAL GUEST.** Pollinator Powers interactive presentation and craft with Special Guest Sullivan County Conservation District. Cabin, Meredith.
- 7/15 Tuesday, 10:00 am-11:15 am. EMC SPECIAL GUEST.** Beavers: Nature's Engineers interactive presentation from Middle Susquehanna Riverkeepers Association. Cabin, Meredith.
- 7/16 Wednesday, 10:00 am-11:15 am. TRAILS and TALES.** Intergenerational. Come listen to a story about insects and create a **BUG HOTEL** using recycled materials like cardboard and old magazines to build a bug hotel! We will also talk about beneficial insects and the best place to hang your finished hotel Cabin, Debbie.
- 7/16 Wednesday, 6:00 pm-8:00 pm- Outdoor Nights.** Ages 8+. Bring your flashlight and join us in tag and many other fun activities. A perfect opportunity for kids to play and stay busy while parents are enjoying an evening on the Green. *If events on the Green are canceled due to weather, this too is canceled.* Carter's Dell, Debbie.

- 7/17 Thursday, 10:00 am-11:15 am. JUNIOR STEAM.** Intergenerational. **(Concept: CODING).** Pre-K to 3rd. Join our Beebot on a coding journey around the Nature Trail and create your very own path for Beebot to follow. Cabin, Debbie
- 7/18 Friday, 10:00 am-11:15 am. STEAM.** Intergenerational. In this activity, you will use recyclable materials to make a marble run. A marble run is a fun toy and a great way to learn about physics concepts like kinetic and potential energy. Do you think your marble will make it to the end of your track? Cabin, Debbie.
- 7/19 Saturday, 10:00 am-11:15 am. Pond Poke with a Macroinvertebrate Specialist,** Carrie Entz. Lycoming County Conservation District. You've walked around it, canoed and sled on it, and maybe even skated across it. Now come meet some of the fascinating critters that live IN it. Using dip nets we'll explore the edges of the pond to see what we can catch. Microscopes will be provided for close-up views Cabin side of Outlet Pond, Debbie.
- 7/20 Sunday, 10:00 am AND 2:00 pm. SUNDAY STROLL:** Intro to Letterboxing Part 2. Learn all about the EMC Letterbox Scavenger Hunt! We will help you find another Letterbox and get you started (or help you continue) with your search. Collect 12 of the 15 Letterbox Stamps to earn a prize! Cabin, Meredith.
- 7/21 Monday, 10:00 am-2:00 pm. EMC SPECIAL GUEST.** The Pennsylvania WoodMobile interactive forestry exhibit - Stop in anytime between 10:00 and 2:00 to explore! Cabin, Meredith.
- 7/22 Tuesday, 10:00 am-11:15 am. EMC SPECIAL GUEST.** Campfire Cooking with Special Guest Mrs. April Gavitt, FCS teacher. Please register by 7/20. Scan the QR code, go to <https://forms.gle/idXju3cHaeHXULQ9>, or call the Cabin. Cabin, Meredith.
- 7/22 Tuesday, 7:00 pm- 8:00 pm. DeWire Center.** Intergenerational. Birds of Prey. Come get up close and personal to explore a variety of species of Birds of Prey found locally in Pennsylvania. Everyone will leave with a new appreciation of this class of animals. Come join. DeWire Center.
- 7/23 Wednesday, 10:00 am-11:15 am. TRAILS and TALES.** Intergenerational. DragonFly or Damselfly? Is curiosity getting the better of you? Join us by the pond as we learn about the similarities and differences of these two creatures and create one using watercolor paint. Cabin, Debbie.
- 7/23 Wednesday, 6:00 pm-8:00 pm- Outdoor Nights.** Ages 8+. Bring your flashlight and join us in tag and many other fun activities. A perfect opportunity for kids to play and stay busy while parents are enjoying an evening on the Green. *If events on the Green are canceled due to weather, this too is canceled.* Carter's Dell, Debbie.
- 7/24 Thursday, 10:00 am-11:15 am. JUNIOR STEAM.** Intergenerational. Come listen to the book *Too Many Carrots* and help the rabbit by building a boat to transport his crop to the local food bank across the river. Cabin, Debbie.
- 7/25 Friday, 10:00 am-11:15 am. STEAM.** Intergenerational. Sailing has played a huge role in our Eagles Mere Lake history as early as 1809. Learn about different types of sailing vessels that have raced on our lake. Come create a boat of bark and other natural materials and see how much mass it can hold before gravity overtakes the buoyant force. We can have our own little Regatta! Cabin, Debbie.
- 7/26 Saturday, 10:00 am-11:15 am. BUG OLYMPICS.** Intergenerational. Back by popular demand. Meet and learn about some beneficial local insects and the critical role they play in our environment and then let the games begin! Bug contestants will be collected ON SITE at the games (no pre-selected bugs, please!) Human participants will work in teams to find and enter their bug athletes. Medals will be awarded. Cabin, Debbie.
- 7/27 Sunday, 10:00 am-11:15 am. SUNDAY STROLL.** Kid Yoga and Mindful Nature Walk with Miss Jess of Endless Triyoga. Bring a mat, blanket, or towel for a fun, relaxing, and free experience for all ages. Cabin, Meredith.
- 7/27 Sunday, 5:00 pm-6:00 pm GENTLE YOGA / SOUND MEDITATION.** Join Amy Houseknecht in a gentle yoga/sound meditation as you enjoy the sights and sounds of nature. Participants need a yoga mat/blanket/towel to lay on during the class. Location: The Dell. Cost is \$20 per person. Cash or Venmo.





**7/28 Monday, 10:00 am-11:15 am. EMC SPECIAL GUEST.** Canoe Camping with Scott Lee??

**7/29 Tuesday, 10:00 am-11:15 am. EMC SPECIAL GUEST.** Tracks and Scat interactive presentation with Special Guest PA Game Commission, Warden Poleshuk. Cabin, Meredith.

**7/30 Wednesday, 10:00 am-11:15 am. TRAILS and TALES.** Intergenerational. Come listen to a story about a bird and then create an **Easy Peazy Bird Feeder** with peanut butter and seeds. Cabin, Debbie.

**7/30 Wednesday, 6:00 pm-8:00 pm- Outdoor Nights.** Ages 8+. Bring your flashlight and join us in tag and many other fun activities. A perfect opportunity for kids to play and stay busy while parents are enjoying an evening on the Green. *If events on the Green are canceled due to weather, this too is canceled.* Carter's Dell, Debbie.

**7/31 Thursday, 10:00 am-11:15 am. JUNIOR STEAM.** Intergenerational. Pre-K to 3rd. Come take a walk through the Nature Trail to hunt squirrels and then listen to the book *The Secret Life of Squirrels*. We will be addressing the concept of spatial relationships, maps, and positional words by navigating and mapping an obstacle course. Cabin, Debbie.

---

## AUGUST

**8/1 Friday, 10:00 am-11:15 am. STEAM. CATAPULT.** Intergenerational. Catapults were mighty handy for pirates in the golden age of piracy (during the 17th century), medieval knights used them centuries earlier to take down massive castle walls. Even Greeks and Romans used catapults about 2,000 years ago! These simple machines are handy, as long as you know how to aim them! In this activity, you will try your hand at catapult technology. Can you predict where your cotton ball will land? Cabin, Debbie.

**8/2 Saturday, ENVIROTHON 101.** Intergenerational. **OWL FORENSICS.** Come explore Barn Owl biology by dissecting owl pellets. Owl pellets are regurgitated masses of undigested food; they give scientists valuable clues about the owl's diet and ecosystem. Grades 5-8. Cabin, Debbie

**8/3 Sunday, 10:00 am AND 2:00 pm. SUNDAY STROLL:** White Arrow Path. Meet at the sidewalk along Pennsylvania Avenue, west of the Athletic Field for an approximately 3-mile hike featuring the Cathedral Pines and climb to Prospect Rock. Be sure to wear sturdy, close-toed shoes and bring water. Join the group at 10:00 am or the group at 2:00 pm, both led by Meredith.

**8/3 Sunday, 5:00 pm-6:00 pm GENTLE YOGA / SOUND MEDITATION.** Join Amy Houseknecht in a gentle yoga/sound meditation as you enjoy the sights and sounds of nature. Participants need a yoga mat/blanket/towel to lay on during the class. Location: The Dell. Cost is \$20 per person. Cash or Venmo.

**8/4 Monday, 10:00 am-11:15 am. EMC SPECIAL GUEST.** Learning About Ticks with Special Guest Sullivan County Conservation District - Cabin, Meredith.

**8/5 Tuesday, 10:00 am-11:15 am. EMC SPECIAL GUEST.** Kindness "Rocks" Project story and craft with Miss Renee and Miss Bethany of Sullivan County Victim Services. How can nature help you learn to be kind to your mind and others? Cabin, Meredith.

**8/6 Wednesday, 10:00 am-11:15 am. TRAILS and TALES.** Intergenerational. Come listen to the story, *Giraffes Can't Dance*. While exploring the concept of sound, you will demonstrate how *Cricket* uses a string instrument, which works by making strings vibrate, and then join us in a musical jam session. Cabin, Debbie.

**8/6 Wednesday, 6:00 pm-8:00 pm-Outdoor Nights.** Ages 8+. Bring your flashlight and join us in tag and many other fun activities. A perfect opportunity for kids to play and stay busy while parents are enjoying an evening on the Green. *If events on the Green are canceled due to weather, this too is canceled.* Carter's Dell, Debbie.

**8/7 Thursday, 10:00 am-11:15 am. JUNIOR STEAM. (Concept: Sound)** Pre-K to 4th but all are welcome. Listen to the story *Drum City* and be a part of our drum circle at the music section of the Nature Trail. We will be talking about sound waves and their properties. Cabin, Debbie.

**8/8 Friday, 10:00am-11:15 am. SMOKEY BEAR AND FIRE PREVENTION PROGRAM.** Intergenerational. After an informative program on fire prevention and the methods used to fight forest fires, everyone's favorite bear will pay a visit. Don't forget your camera! Intergenerational. Cabin, Debbie.

**8/9 Saturday, 10:00 am-11:15 am. GNOME HOMES.** Intergenerational. Build a home or village for a gnome using dry woodland materials FOUND ON SITE. Construction sites will be carefully selected and environmental impact considered. Our structures will be there for all to see along the railroad bed. Cabin, Meredith.

**8/10 Sunday, 10:00 am AND 2:00 pm. SUNDAY STROLL:** Rainbow Path. Meet at the cabin for an approximately 3-mile hike. Be sure to wear sturdy, close-toed shoes and bring water. Join the group at 10:00 am or the group at 2:00 pm, both led by Meredith.

**8/11 Monday, 10:00 am-11:15 am. EMC SPECIAL GUEST.** Explore the History of the Laurel Path Hike with the Eagles Mere Museum. Meet at the Cabin for an approximately 2-mile hike and scavenger hunt that combines history with nature. Be sure to wear sturdy, close-toed shoes and bring water. Meredith.

**8/12 Tuesday, 10:00 am-11:15 am. EMC SPECIAL GUEST.** The Majestic Elk of Pennsylvania interactive presentation with Special Guest Ben Porkolab from Keystone Elk Country Alliance - Cabin, Meredith.

**8/12 Tuesday, 7:00 pm- 8:00 ish pm. DeWire Center. CLYDE PEELING REPTILE SHOW:** Intergenerational. Come join the staff and reptiles of Clyde Peeling and enjoy learning all about turtles, crocodilians, lizards, and snakes. We will look at the ecology and natural history of these reptiles. The audience will leave a new appreciation of this class of animals.

**8/13 Wednesday, 10:00 am-11:15 am. TRAILS and TALES.** Intergenerational. After listening to a story about animal shelters, kids will build a house to provide shelter for a bear family using building materials found on-site. Cabin, Meredith.

**8/13 Wednesday, 6:00 pm-8:00 pm- Outdoor Nights.** Ages 8+. Bring your flashlight and join us in tag and many other fun activities. A perfect opportunity for kids to play and stay busy while parents are enjoying an evening on the Green. *If events on the Green are canceled due to weather, this too is canceled.* Carter's Dell, Debbie.

**8/14 Thursday, 10:00 am-11:15 am. JUNIOR STEAM.** Intergenerational. Did you miss something that we did for Junior Steam? Let us know and we can try to do that for you. Cabin, Debbie.

**8/15 Friday, 9:00 am-4:00 pm. Last Day Cabin is open.** Come and visit the cabin to say your goodbyes. If there is something you missed this summer and the materials are available, we can try to do it. Cabin, Debbie.

**8/16 Saturday, 9:00 am-10 am. GENTLE YOGA / SOUND MEDITATION.** Join Amy Houseknecht in a gentle yoga/sound meditation as you enjoy the sights and sounds of nature. Participants need a yoga mat/blanket/towel to lay on during the class. Location: Village Green. Cost is \$20 per person. Cash or Venmo.





The Board would like to thank each and every one of our donors in 2024, whose support continues to underwrite our important work. Thanks also to all who made our programs possible, and our trails cleared with their gifts, time, talent and energy. We are so grateful.

## **The Conservancy's Supporters**

### **Golden Eagle**

---

- Robert & John Adrian, Catharine H. DeWeese Memorial Trust
- Eric & Margie Allen
- Dorrie Brand
- Arthur & Jane Bratton, Bratton Charitable Trust
- Frederick & Sarah Brodie
- William & Virginia Craig
- Eagles Mere Historic Village, Inc
- Brian Gaul
- Frederick & Kathy Godley
- Burton & Yardly Gray
- Henry & Hilary Long
- Donald Lundy
- Newton & Katrine Pendleton
- Louise Reighard
- Scott & Carolyn Repke
- Stephen & Janet Ryan
- David & Maggie Stoeffel
- Peter & Barbara Swinick
- Steven & Susan Wilds
- Endless Mountains Heritage Region

### **American Eagle**

---

- B.J. & Tracy Albertini
- Anonymous
- Mary Blondy Loyalsock Fndtn
- Dana DiCarlo & Scott Plank, JS Plank & DM DiCarlo Family Fndtn
- Rodney & Robin Dickinson
- Frances Quay Dortch
- John & Shirley Frisch
- Randy & Justine Greene
- Richard & Carole Johnson
- Leslie Johnson
- Connie Lacon
- Margaret Estey Memorial Fund



### **Imperial Eagle**

---

- Rawle Anders & Mary Van Ogtrop
- Liam & Katie Baker
- Cynthia Bartus & Steve Thompson
- Mary Blondy
- Thomas & Laurie Burkholder
- Robert & Christine Carter
- Frank & Joan Celestino
- Elie-Anne Chevrier Lewis & Rudy Lewis
- Larry & Sherri Cooney
- Alyson & Brian Cunningham, The Children of John & Lisa McNichol Charitable Fund
- Willis DeLaCour, DeLaCour Family Fndtn
- Lisa Detwiler & Don Mahoney
- William Detwiler
- John & Linda Easton
- Gus & Annie Engel
- Lori Faeth
- Adelaide Ferguson & Ron Cahan
- George Freeland
- Gerald & Suzanne Ganse
- Kevin & Karen Gardner
- Kyle Gardner
- Glenn Henkel & Molly Kirkpatrick
- Kathleen Holmes
- Edward Kassab & Janice Johnson
- Jeff & Jess Klemens
- Sam & Laurie Lundquist
- Keith & Lisa Murray
- Philip & Kelly Neiderer

- Karen Olejarz
- Seth Orbach & Anne Klotz
- George Pedlow

- Pat Piper-Smyer
- Raymond & Susan Schreckengaust
- Brian & Sharon Smith

- Quay & Darlene Smith
- Tim & Rachael Turner
- Fred Weeman

## Crowned Eagle

---

- Virginia Adams
- Kate Albertini
- Shaun & Katrin Antram
- Carl & Judy Bass
- Donald & Laura Besecker
- Alice Buehner
- Dennis & Ruth Craig
- James & Linda DeAngelo
- James & Cindi Drobile
- James & Linda Feczko
- Hardy & Christina Hansen

- James & Bernadette Harrison
- Ann Horgas-Marsiske
- Brian Kell & Jacquelyn Fetrow
- David Lovelace
- John & Maura McCormack
- Thomas & Diane McElheny
- Kevin & Judy McFadden
- Tom & Barbara Micco
- Marty & Pat Milligan
- Dino & Courtney Pinto

- Elizandro Salguero & Emily Freeland
- Gregory & Lorraine Scaven
- Ned & Robin Sheedy
- Bryn Smythe & Jack Reuben
- Darrell & Barbara Story
- Edwina Vauclain
- Elizabeth Vrooman & Richard Baskin
- Brian Walheim & Christina Coughlin
- Marria Walsh

## Eagle

---

- John & Jane Barth
- Mark & Betsy Beaugard
- Anne Bert
- Greg & Kara Blasko
- V. & Patricia Brinkerhoff
- Tom & Anne Brooks
- Andrew Burkholder
- Joseph & Kathleen Caufield
- Wendy Cimmet
- Eagles Mere Civic Club
- Frank Comfort
- Dan Davies
- Stanley & Nancy Davis
- Robert & Katherine Davis
- Brad & Ann Dyer
- Charles & Joanne Eater

- John & LuAnn Ecker
- Richard Freeman & Noreen Shanfelter
- Jim & Marion Godfrey
- Stephen & Sue Hilbert
- Peter Hodgson
- Nancy Housenick
- Elizabeth Humes
- John & Robin Imbesi
- Mary Jack
- A. Scott Johnson
- Margaret Kauffman
- Rene & Mary Koppels
- Lewis & Martha Kraska
- John & Claudia Leo
- Susan Lieber

- Donald & Lynn Lucas
- Pete & Sue Lynah
- David & Kathy McCorkle
- Charles Palmer & Anne Steuart
- Dennis & Kate Petricoin
- Andrew & Courtney Rau
- Michael & Alyssa Rickels
- Frank & Beth Schetroma
- Thomas Shannon
- Barbara Sonies
- Janet St Goar
- Charles & Karen Stacks
- Juliet Stauffer & David Loble
- Richard & Jean Walkup

## Member

---

- Bonnie Avillion
- Ted & Lori Berger
- Meyer & Joanne Black
- Cindy Bower
- Peggy Brass
- Jamie & Debbie Brown
- Christopher & Robin Buzas
- Nathan & Maggie Byelick
- Barbara Clothier
- Warren Cook
- Antonio & Elinor Damo
- Kathleen Deasy
- Ray & Ashley Del Bianco
- David & Debbie Eater
- Bob Gerber & Lori Carpenter
- Randy & Hilary Gilmore

- Andrew & Sarah Haflett
- Jeffrey & Susan Hamilton
- Marty & Rachel Hammond
- Dale Hastings
- Pete & Deserie Hirsch
- Lynne Huddleston
- Keith & Christine Huffman
- Stephen Jaquith
- Linda Kruger
- Lewis & Pat Leibowitz
- John & Linda Lundy
- Marty Mauzy
- Art & Jane McGarity
- Chris & Virginia McKee
- Brian & Eileen McLaughlin
- Kevin & Maura McLaughlin

- Tom & Nina Mulherin
- Janice Newcomer
- Beth Parrish & David Kleiner





- Howard & Marilyn Paul
- Joe & Helene Price
- Peter & Louisa Randall
- John & Tina Richlin
- Ruth Rode
- William & Mary Jo Saxe
- Scott & Dana Setzer

- Leo & Barbara Sewell
- Jack Simonds & Sarah Weedon
- Mary Smith
- Eric Smith & Mireia Lizandra
- John & Bonnie Snyder
- Peter & Jeanne Sullivan
- David & Joan Werner

- Robert & Charlotte Wever
- Bethany White
- Sam & Rosemary Whitehouse
- George & Virginia Wilkes
- Lee Yancey

## Donation

- Richard & Mary Allen
- Linda Berry Gould & Dennis Gould
- Arnold & Linda Borish
- Richard Bradley
- Fran Clark
- Linda Coleman
- Dennis Daugherty
- Laura Dolan

- Kathy Gosliner & Joe Lurie
- Danielle Kraus
- Charles Lutz
- Ronald & Carole Madle
- Tavis & Ashley McElheny
- Judith Moore
- Lynn Petnick
- Shirlee Rainey

- B.Z Reily & Eric Stocker
- Donna Rodzewich
- Chris & Sharon Sides
- Noah Troxell
- David & Nancy Voneida
- Mark & Liz Ward



## Let's Stay Connected

As we gear up for another exciting summer on the mountain, be sure to check out our social media pages for all the latest updates on events, hikes, and volunteer opportunities. Our schedule is chock-full of engaging activities for the young and young at heart. There is truly something for everyone and we would love to have you join us.

Here's where to find us:

-  Facebook (Eagles Mere Conservancy)
-  Instagram (@ eagles\_mere\_conservancy)

Plus we will be regularly posting on our local Nextdoor site as well as our community Facebook page (Eagles Mere PA Community)

Our summer schedule of activities, as well as a digital copy of this newsletter can be found on our website: <https://www.eaglesmereconservancy.org>

The Conservancy is always looking for people to get involved in the work that we do. You do not have to be on the board to join one of our committees. Interested in learning more? Email us at [conserve@epix.net](mailto:conserve@epix.net) Or send us a message on any of our social media pages. We look forward to hearing from you!

### Gifts received in memory of:

- Mary Godley
- Mick Piper-Smyer
- Arnold Dahm
- Alice Weeman
- Steve Klarsch

### In honor of:

- Tyler Braun
- Laurie & Thomas Burkholder

***Eagles Mere Conservancy Inc.***

P.O. Box 64

Eagles Mere, PA 17731-0064

***Eagles Mere Conservancy – Membership Form***

Name: \_\_\_\_\_

Address: \_\_\_\_\_

City: \_\_\_\_\_ State: \_\_\_\_\_ Zip: \_\_\_\_\_

Telephone: \_\_\_\_\_ Email: \_\_\_\_\_

*Contribution:* \_\_\_\_\_ over \$1000.00 (Golden Eagle) \_\_\_\_\_ \$1000.00 (American Eagle)

\_\_\_\_\_ \$500.00 (Imperial Eagle) \_\_\_\_\_ \$250.00 (Crowned Eagle) \_\_\_\_\_ \$125.00 (Eagle)

\_\_\_\_\_ \$75.00 (Membership) \_\_\_\_\_ Other

*Return this form with your contribution to: The Eagles Mere Conservancy, P.O. Box 64, Eagles Mere, PA 17731*

The official registration and financial information of the Eagles Mere Conservancy may be obtained from the Pennsylvania Department of State by calling toll free within Pennsylvania, 1-800-732-0999. Registration does not imply endorsement.